



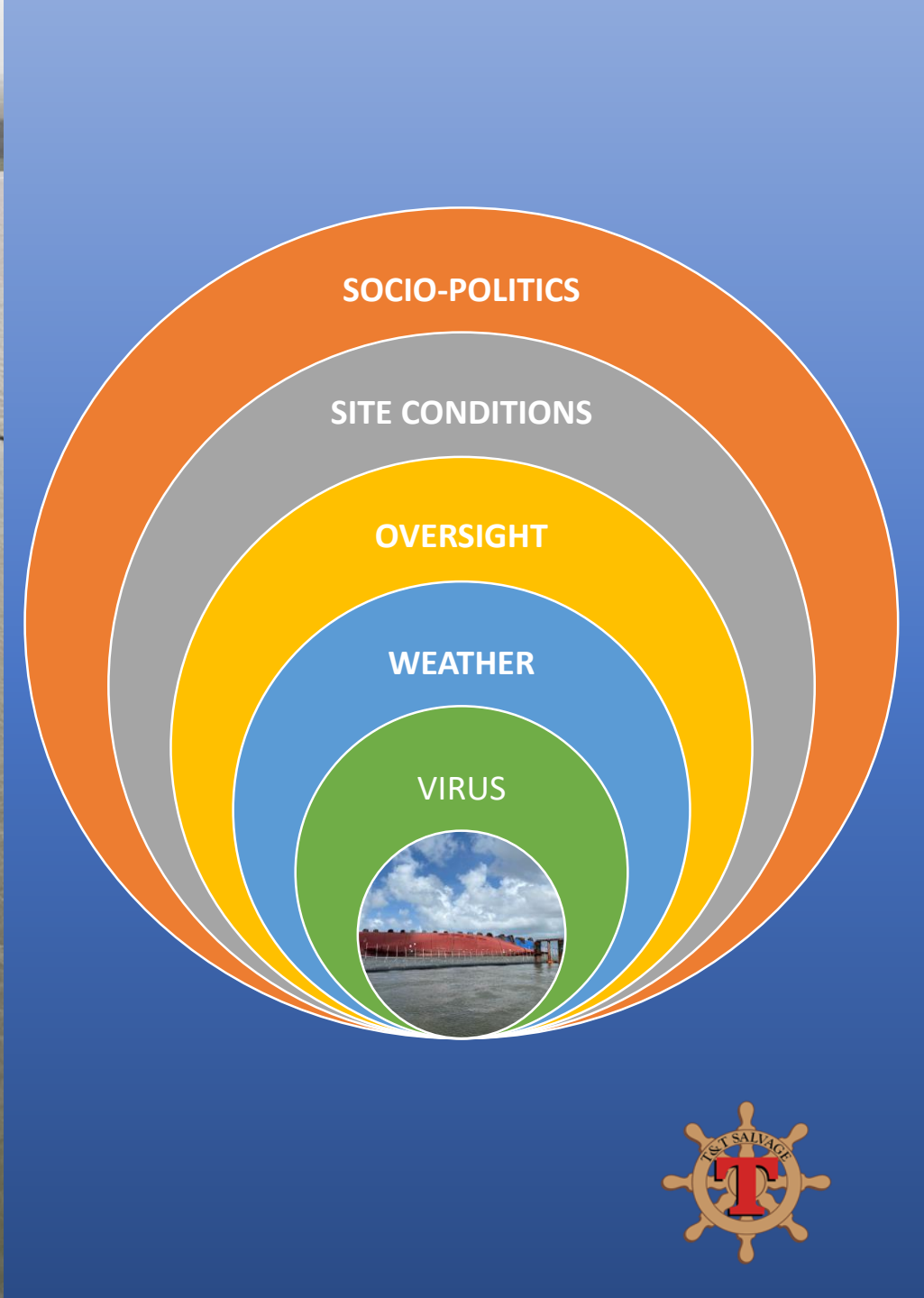
IUMI WEBINAR – November 17, 2020



M/V GOLDEN RAY

Wreck Removal Operation & Challenges

Mauricio M. Garrido
President
T&T Salvage LLC



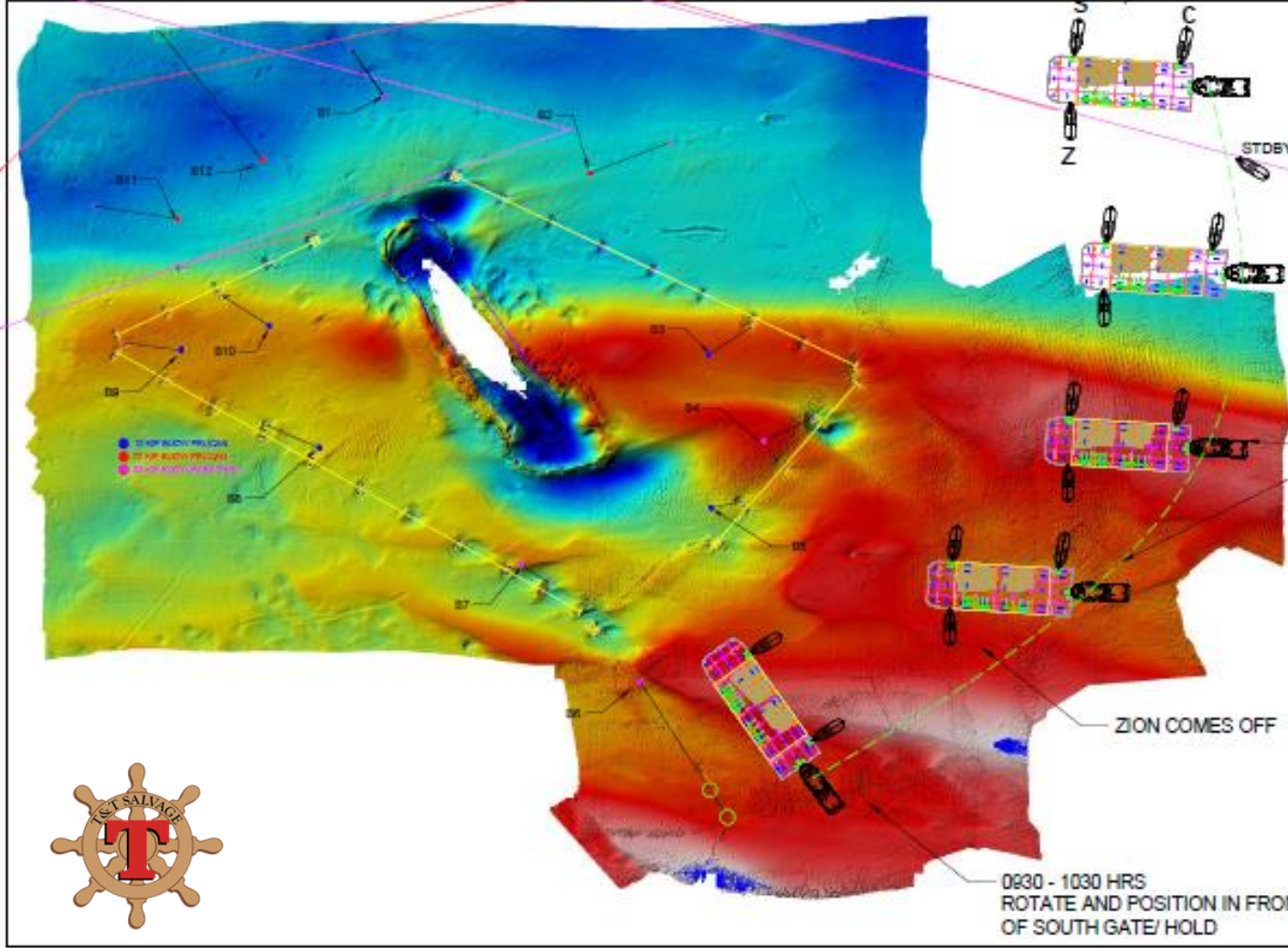


GOLDEN RAY – WRECK REMOVAL

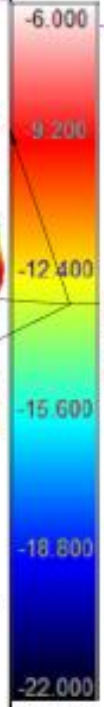
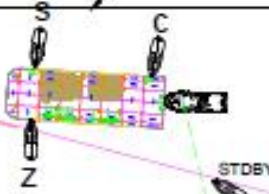
Unique & Compounding Challenges

- Covid Risk – Distancing – “Salvage” by Zoom
- Super Active Hurricane Season
- Extreme Tides & Currents
- Dynamic Coastal Zone - Scouring
- Ecosystem Concerns
- Engaged Local Community
- Government & NGO Oversight
- US Flag limitations
- Social Unrest – Brunswick Murder





0800 HRS ARRIVAL
CURRENT- 1.7 KTS EBB



0830 - 0930 HRS
MANUEVER TO SOUTH GATE
CURRENT- 1.5 KTS FLOOD
DROPPING TO 0.5 KTS

ZION COMES OFF

0930 - 1030 HRS
ROTATE AND POSITION IN FRONT
OF SOUTH GATE/ HOLD

1100 HRS DEPART FOR
MAYORS POINT



GOLDEN RAY – WRECK REMOVAL

Unique & Integrated Solutions

- **VB-10000 - Catamaran**
- **Largest US Flag Heavy Lifter – 7,500 tons**
- **Dynamically Positioned (DP3)**



GOLDEN RAY – WRECK REMOVAL

Unique & Integrated Solutions

- MARS 1600 Drydock = 4 Pontoons
- 200 ' x 159' – 6,500 ton capacity
- Fit between VB 10000



GOLDEN RAY – WRECK REMOVAL

Unique & Integrated Solutions

- The EPB – Custom Design
- 90 x 100+ foot long steel piles
- Dual Purpose – Oil & Debris



GOLDEN RAY – WRECK REMOVAL

Unique & Integrated Solutions

- The largest US Flag deck barge 400' x 130'
- Custom Engineered-Fit Cradle System
- Sections 1 & 2



GOLDEN RAY – WRECK REMOVAL

Unique & Integrated Solutions

- Leased 5 Acre Site -GPA
- Engineered Pile Clusters
- Vehicle Processing Area



GOLDEN RAY – WRECK REMOVAL

Unique & Integrated Solutions

- Common Vision & Objectives
- Full Integration & Engagement
- Effective Teamwork



THANK YOU

