

**Survey**Association  
est. 1914

Remote surveys

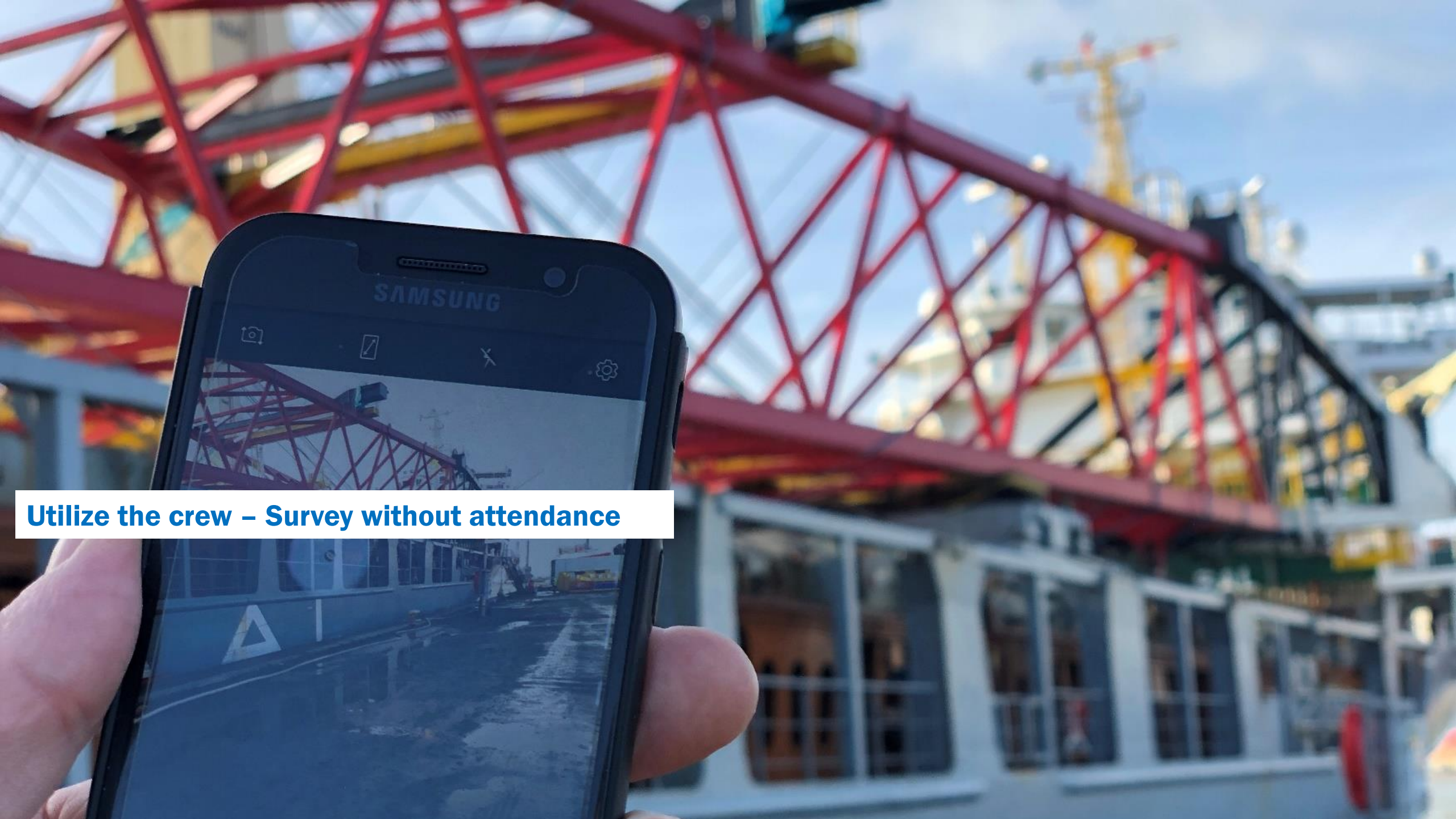
Capt. Henrik Uth, CEO Survey Association

**What to do when vessel is at sea and has an incident**

**Or when surveyor cannot travel.....?**

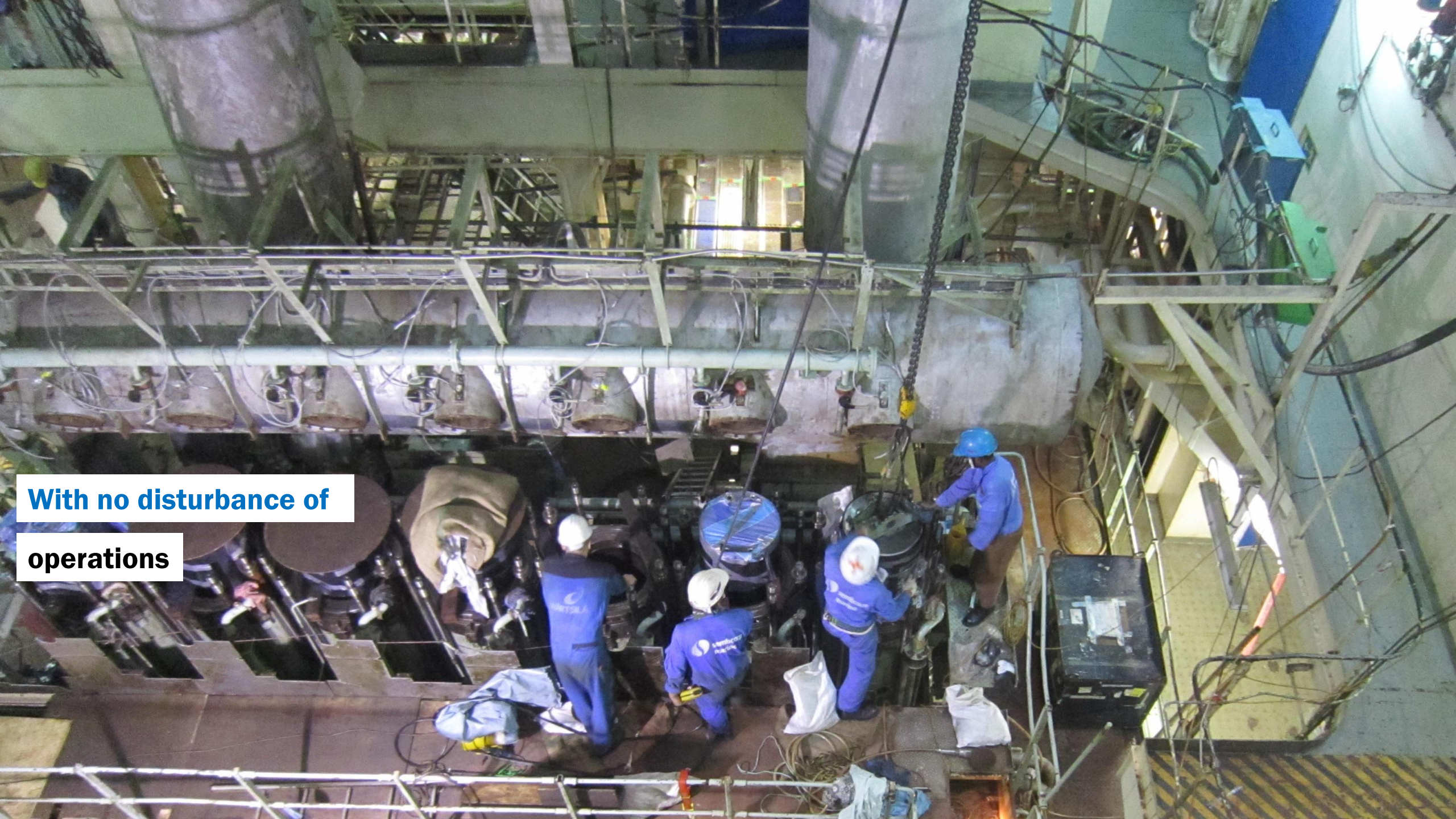






**Utilize the crew – Survey without attendance**





**With no disturbance of operations**





**No travel time, no travel cost**

**and no waiting time**





**Utilize the marine experts**

**ashore for review and**

**analysis**





**Remote survey to be a structured and  
intuitive Remote self-survey  
Capturing the complexities of [marine](#)**



# Application of “remote surveying”

## Drone surveys



## Remote survey



## Live Streaming





# Since COVID-19 global travel 'lockdown'

## Condition surveys (IMO and non-IMO) on:

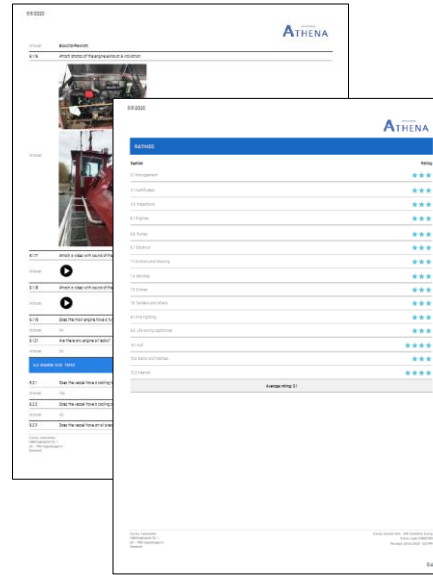
- Hopper dredgers
- Anchor handlers
- Product tankers
- Cable driven ferries

## Damage survey types (First Notification of Loss):

- Engine breakdowns
- Engine-room fire
- Windlass damage
- Contact damage

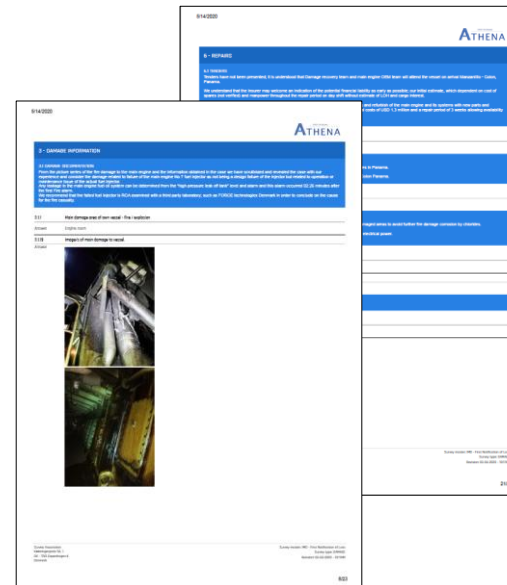
## Survey locations:

- Arabian Gulf
- European ports
- Indian Ocean
- Mediterranean Sea
- Atlantic Ocean

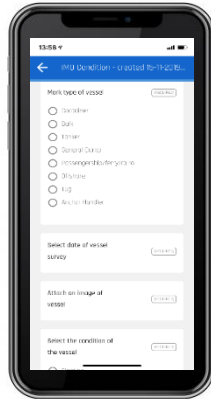


## Est. savings:

Time:	+200 hours
CO2 emission:	+50 tons
Survey cost:	+ 40,000 USD







**Survey**Association  
est. 1914