



**THE INTERNATIONAL UNION OF MARINE  
INSURANCE & DPS AFRICA PRESENT**

**« STORAGE RISKS LOSS PREVENTION  
A SPECIAL FOCUS ON AFRICA »**

By Caroline PAUL – Manager DPS AFRICA

November 2022



CONGO

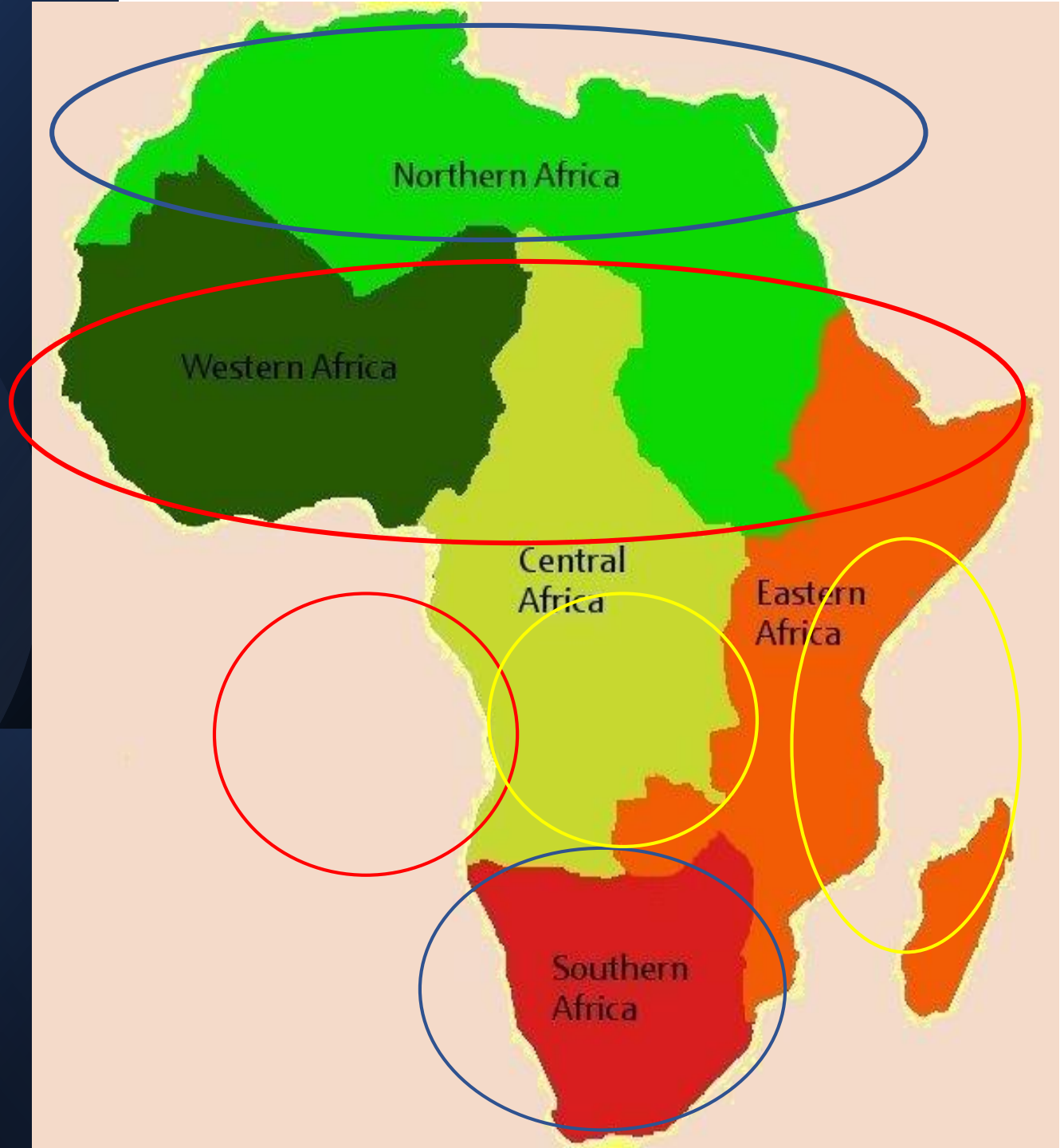
# TABLE OF CONTENT

- WHY CHOSE THIS TOPIC
- WHAT MAKES STORAGE THROUGHOUT AFRICA SO PECULIAR
  - Different regions, different risks
  - Focus on the risks
- THE CORRECT EVALUATION
- THE REASONABLE DOUBT
- THE IMPORTANCE OF DOCUMENTATION
- KEY LESSONS LEARNED
- QUESTIONS AND ANSWERS

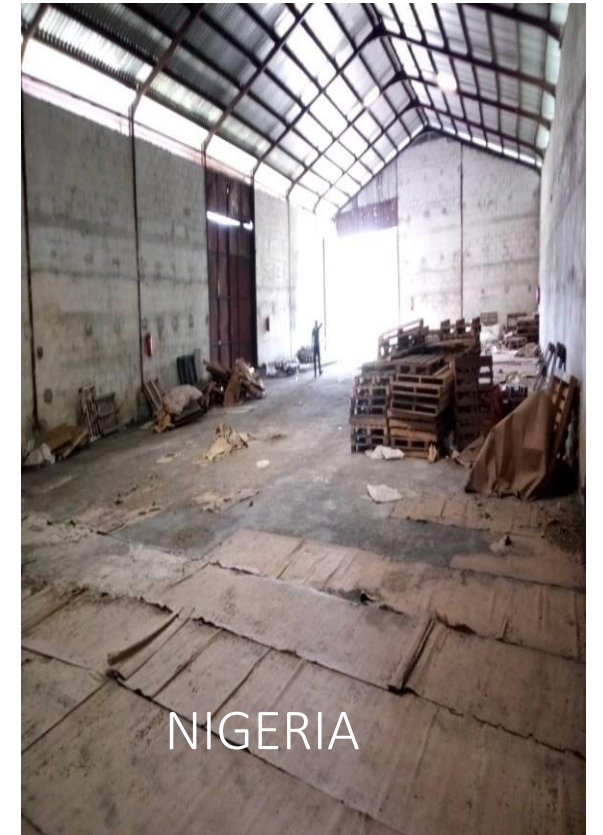
# WHY CHOSE THIS TOPIC



WHAT MAKES  
STORAGE  
THROUGHOUT  
AFRICA SO PECULIAR



# DIFFERENT REGIONS – DIFFERENT RISKS





Nigeria



Zambia

## FOCUS ON THE RISKS DRAINAGE CHANNELS



Congo

# THE EXAMPLE OF DURBAN – APRIL 2022





**CYCLONES**





# CYCLONES - MOZAMBIQUE



# CONSTRUCTION RISKS

- Walls collapsing
- Leaking roof
- Lack of isolation of the walls
- Fragile foundation and floor
- Lack of maintenance

Ivory Coast

# CONSTRUCTION RISKS



Congo

Nigeria

Ivory Coast

LACK OF  
MAINTENANCE

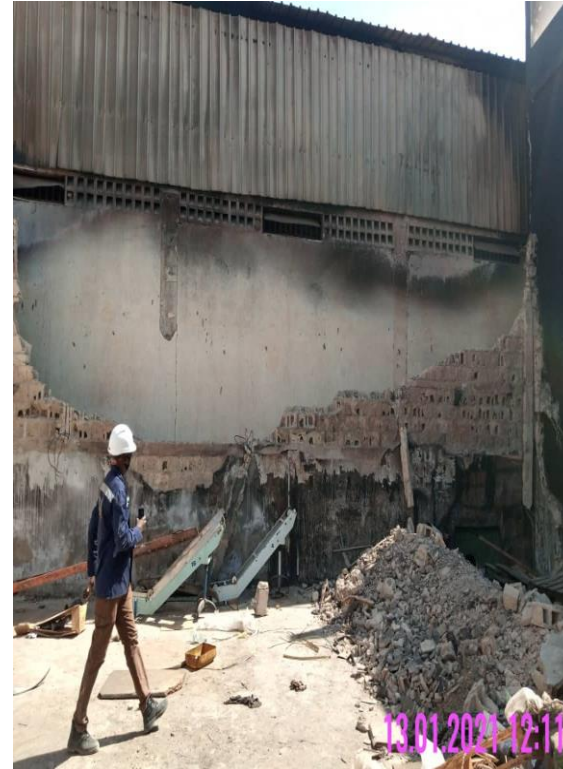


NIGERIA

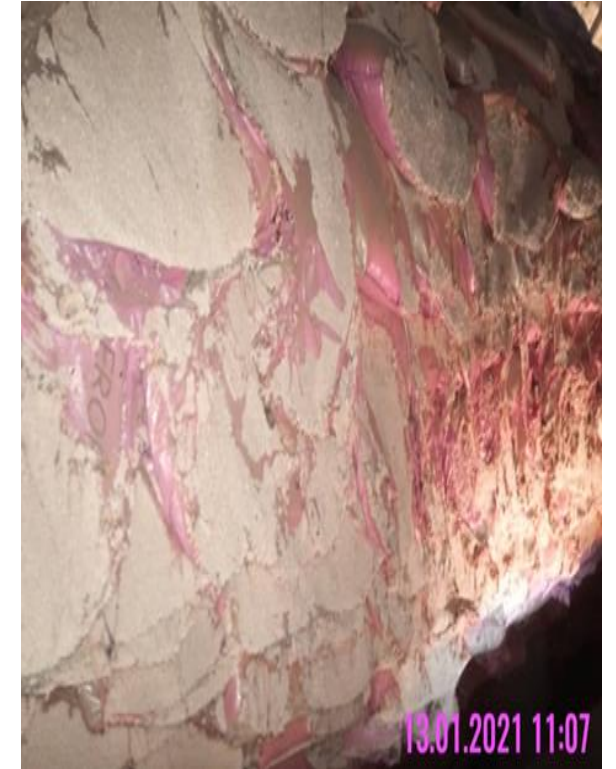
# FIRE RISK - INSTALLATIONS



Mozambique



Senegal



# FIRE FIGHTING EQUIPMENT



UGANDA



# FIRE - TANK EXPLOSION IN TUNISIA

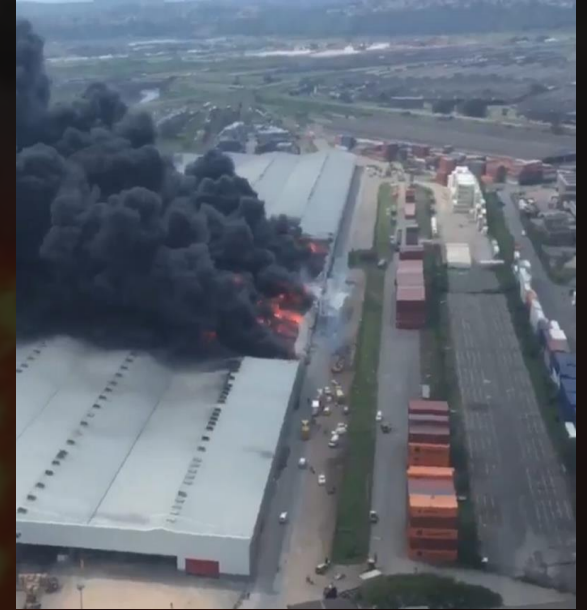
# FIRE - OTHER RISKS

- Lack of temperature and moisture control of cargoes prone to self heating
- Cargo stored up to the roof without ventilation
- Cargo stored in contact with lights
- Lack of signage for fire fighting equipment and non smoking
- Lack of cleanliness with dust creating short circuits



# FIRE RISK WELDING

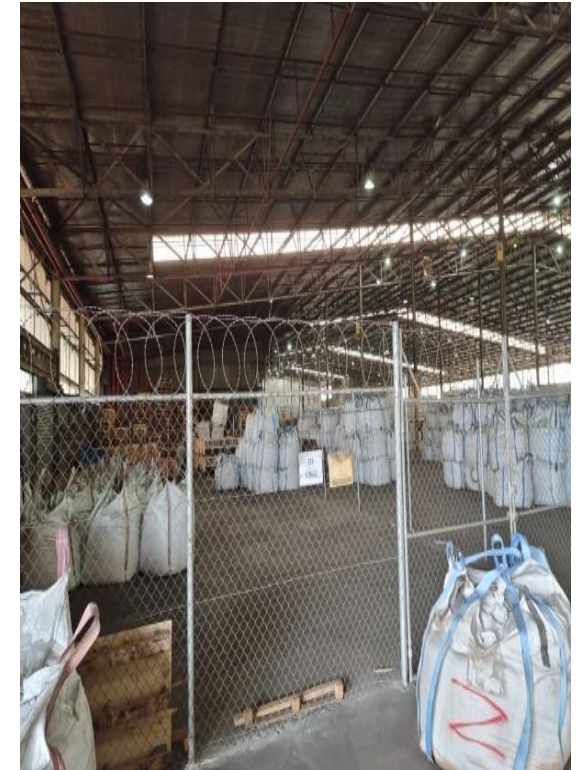
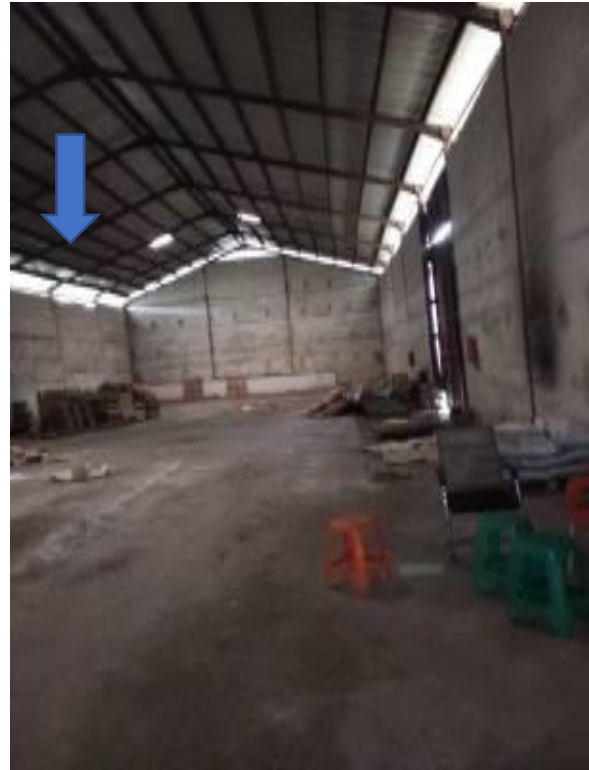
Durban – South Africa



# THEFT CIVIL WARS AND UPRISING OF PEOPLE

- PERIMETER WALLS
- CCTV CAMERAS
- PRIVATE SECURITY COMPANY
- ACCESS PROCEDURE
- EXTERNAL LIGHTING
- ANTI-INTRUSION ALARM

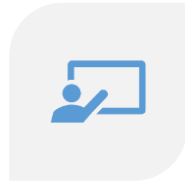
# THEFT - CIVIL WARS - UPRISING OF PEOPLE



NIGERIA

MOROCCO

# HANDLING EQUIPMENT



LACK OF  
TRAINING



STORAGE OF  
BATTERIES



LACK OF  
MAINTENANCE



SENEGAL

# REFRIGERATED AND FROZEN PRODUCTS

Electricity failures

Lack of maintenance of  
the generators in back  
up

Temperatures - Not  
remotely controlled  
and linked to alarms

Few alarms when doors  
are left opened

Fire suppression  
system not designed to  
cope with fire in cold  
storage areas

No emergency plan in  
case of cold chain  
breakdown

No air moisture control

Lack of daily procedure  
for the control of the  
temperatures – no  
temperature chart

During maintenance  
and repairs, no  
procedure for reagents  
to the back up fridge



NIGERIA



Tanzania



WEIGHING EQUIPMENT – STOCK RECORDS



TOGO

## PEST CONTROL – FUMIGATION

# RACK STORAGE

- Racks not installed on a flat floor
- Column post not anchored in the floor
- Racking safety capacity exceeded
- Post protectors not installed
- Racks installed against the walls
- Training safety operations



# THE CORRECT EVALUATION STANDARDS

**NON-COMPLIANCE**



**PREMIER FIRE**  
SAFETY ENGINEERS  
SAFETY DOES NOT HAPPEN BY ACCIDENT

Premier Attraction 343 T/A PREMIER FIRE - PO BOX 76275 | NEWLANDS EAST | 4035  
REGISTRATION NO: 2004/069403/23 | VAT NO: 4750265573  
39 EATON ROAD, UMBILO, 4001 | 031-205 0548 | 079 411 2716 | [www.premier-fire.co.za](http://www.premier-fire.co.za)

## CERTIFICATE OF COMPLIANCE

This certificate serves to confirm that the Fire Equipment listed below has been serviced, installed and certified in accordance with the South African National Standards (SANS) 10139, South African Bureau of Standards (SABS) 0400, SANS 10400 and SANS 1475 regulations. All work was carried out by SAQCC approved Technicians.

Type of Equipment	Qty	Condition	Non conformance
Fire extinguishers	52	Good	
Fire hose reels	9	Good	
Fire hydrants	6	Good	

COC issue date : 15-12-2021  
Expiry date : 15-12-2022  
**SABS PERMIT NO** : **10264/16218**  
**REG NO** : **01/519**

Ngubeko Brightman Khuzwayo  
SAQCC Technician 21/150

THIS CERTIFICATE IS VALID FOR 12 MONTHS ONLY  
Copyright - Premier Fire  
All rights reserved

# THE CORRECT EVALUATION

BEFORE

AFTER





**High Medium And Low Icon with Risk Indicator**

THE REASONABLE DOUBT

# RECOMMENDATIONS

## 8. RECOMMENDATIONS

<i>Item</i>	<i>Recommendations</i>	<i>State of severity</i>	<i>Date of planned compliance</i>
		<b>High</b>	<b>H</b>
		<b>Medium</b>	<b>M</b>
		<b>Low</b>	<b>L</b>
A	Fire assembly points and instructions prohibiting smoking in the warehouse premises be implemented	H	Immediately
B	Fumigation procedures and traps should be implemented as one warehouse had insects	H	Immediately
C	Drainage channels noted with stagnant water should be maintained	H	Immediately
D	More fire extinguishers should be added inside the warehouse, hung on the walls, marked and duly serviced: 15 in warehouse 1 10 in warehouse 2 10 in warehouse 3 Fire hose and standpipes should be installed in front of the warehouse, duly serviced.	H	Immediately
E	Empty wooden pallets should be evacuated at the end of each working day and stored in a separate building	H	Immediately
F	CCTV cameras should be installed inside the warehouses	L	When possible
G	The warehouse should be supplied with weighing scales duly serviced/calibrated to avoid relying on weighing done at UGACOF	M	As soon as possible
H	The walk paths inside the warehouse should be clearly marked	L	When possible
I	A grain temperature and moisture monitoring system and procedure needs to be installed	M	As soon as possible
J	Cleaning of the warehouse and rebagging should be done immediately after each operation	M	As soon as possible
K	Fire alarms should be installed in the warehouses	M	As soon as possible

# DOCUMENTATION

fire certificate

firefighting training procedure

building maintenance procedure and records

electrical installation control procedure and records :

fumigation certificate and temperature / moisture control of cargoes

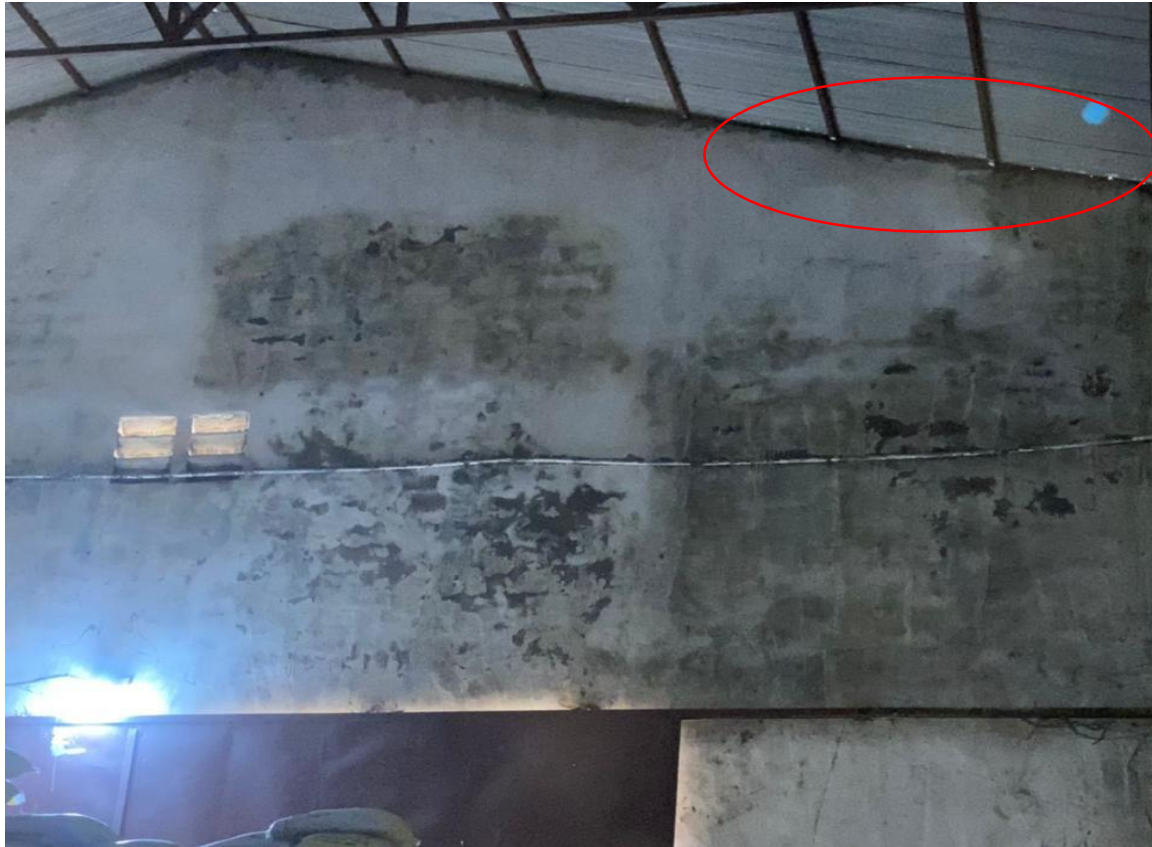
business registration certificate

recruitment procedure of the watchmen and employees –

weighbridge last calibration certificate

dangerous goods license

# KEY LESSONS LEARNED



SIERRA LEONE

# KEY LESSONS LEARNED

EGYPT

NIGERIA



# KEY LESSONS LEARNED

## SOMALIA







# CONCLUSION



QUESTIONS

ANSWERS