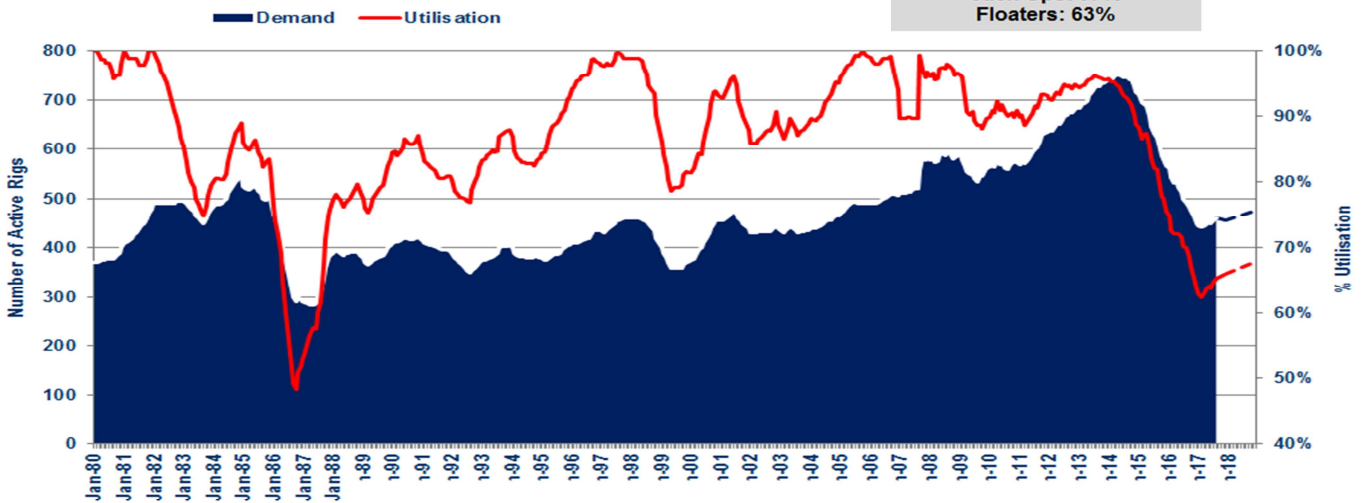


IUMI 2017 Tokyo – Energy Fact Sheet
Mobile Offshore Drilling Units
as prepared by the IUMI Facts & Figures Committee
Figures are as at 31th August 2017

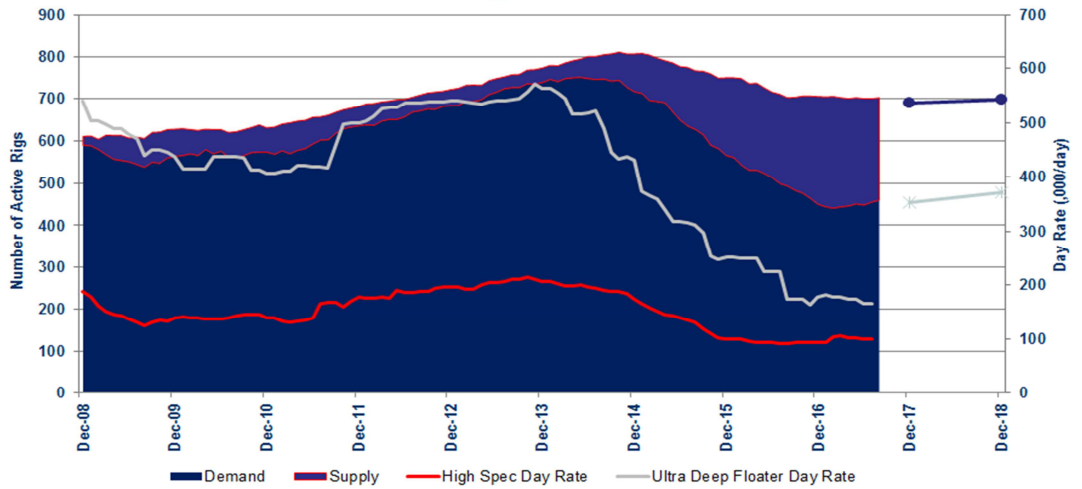
Rig Utilization - a longer term view



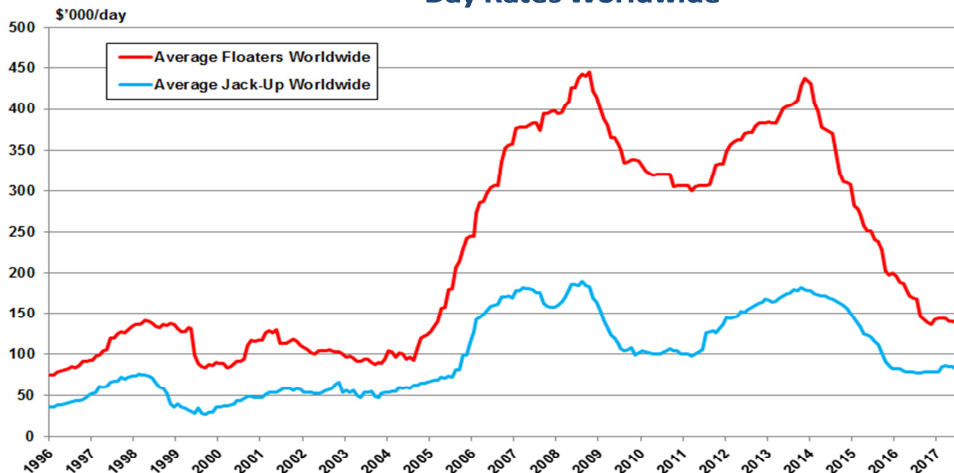
	Demand	Supply
Aug-15	627	139
Aug-16	493	210
Aug-17	460	243

Demand is lower than the same point one year ago however there has been a trend upward with the lowest demand levels at December 16. This increase is consistent with supply also increasing

Rig Utilization



Day Rates Worldwide



Utilisation rates, after hitting a low of 62% in February of this year have started to increase slowly, to a 65% utilization rate at August 2017. This is expected to increase to 68% by the end of 2018. This is still low compared to previous levels.

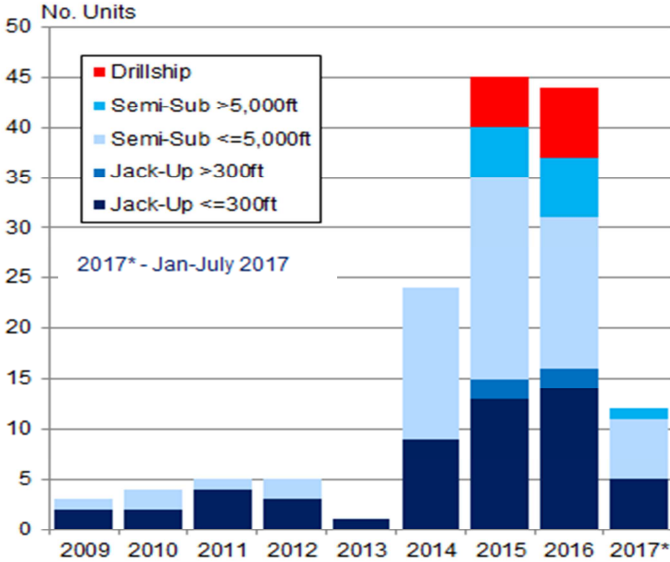
Day rates worldwide have had a small increase in the first couple of months of this year however they have dropped again to now be at around \$130k per day for floaters. A similar trend can be seen for the Gulf of Mexico Rates.

Information Sources

The source of information for this Fact Sheet is Clarksons Research

IUMI 2017 Tokyo – Energy Fact Sheet
Mobile Offshore Drilling Units
as prepared by the IUMI Facts & Figures Committee
Figures are as at 31th August 2017

Rig Demolitions



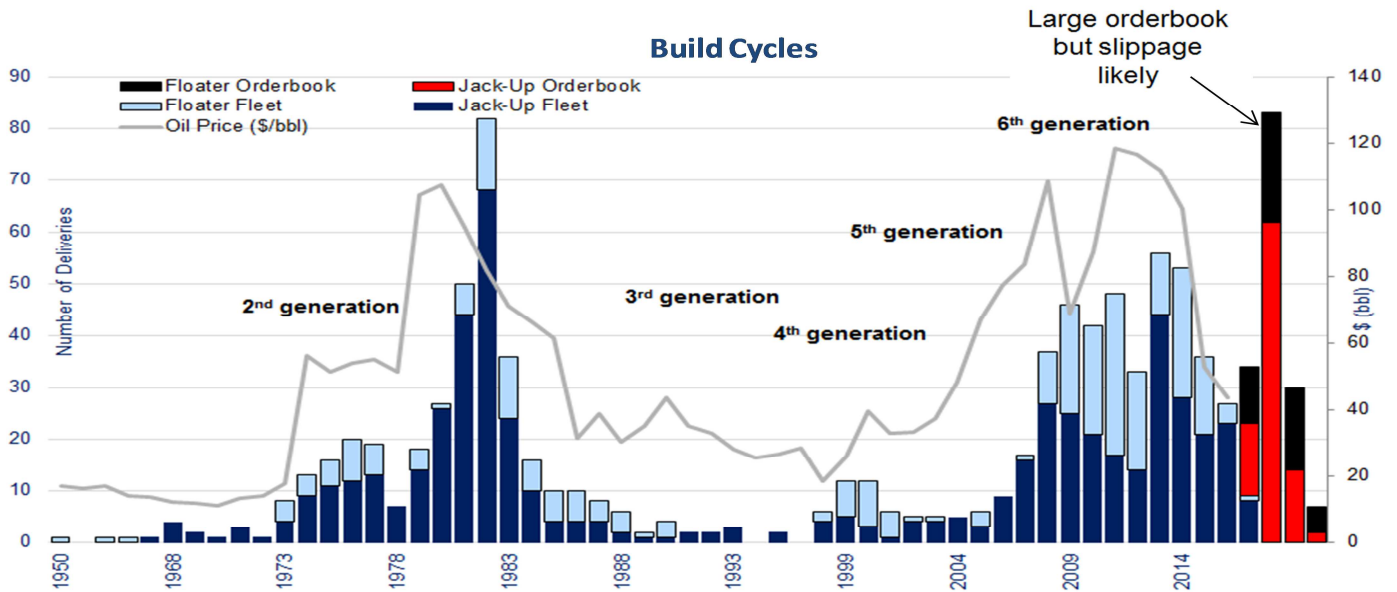
Rig demolitions were much higher for the 2015 and 2016 year than previously.

There is a large order book in the 2018 year for mobiles but there is likely to be slippage.

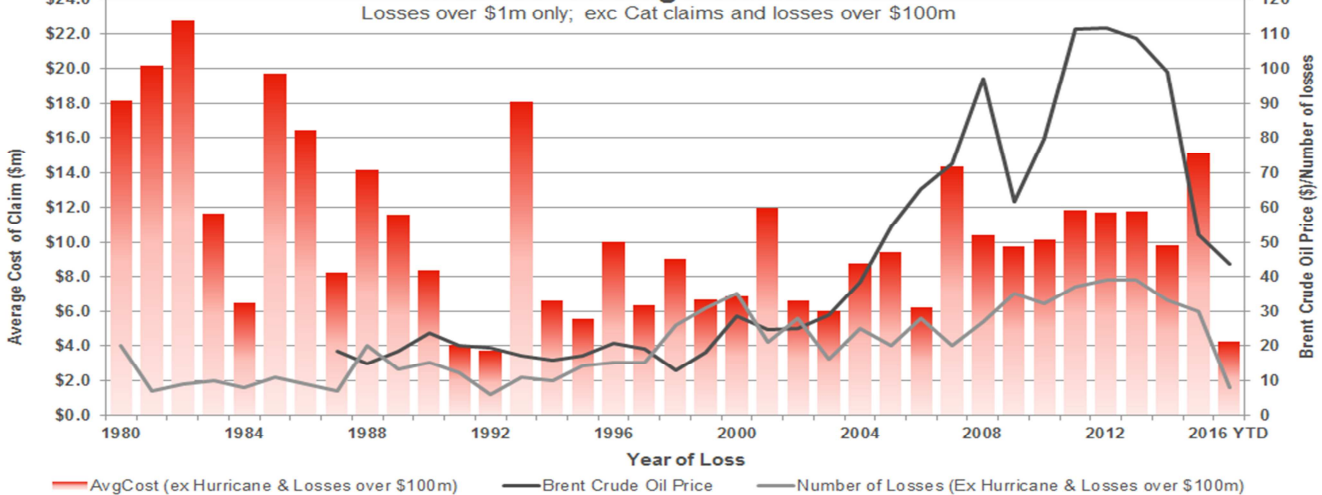
Claims frequency has fallen again, from an annualised rate of 3.5% during 2009-11 to 2.8% between 2012-15. The average size of claims below \$100m have increased from US\$7.3m per annum during 2002-04, to US\$12.0m during 2012-15 - a 5% rise per annum. There have been 20 losses above \$100m since 2009 - there were just 5 between 2001-08.

Note: Figures exclude hurricane losses and are based on Willis Loss data to 31 Jan 2017.

Build Cycles



Mobiles - Average Claims Cost



Information Sources